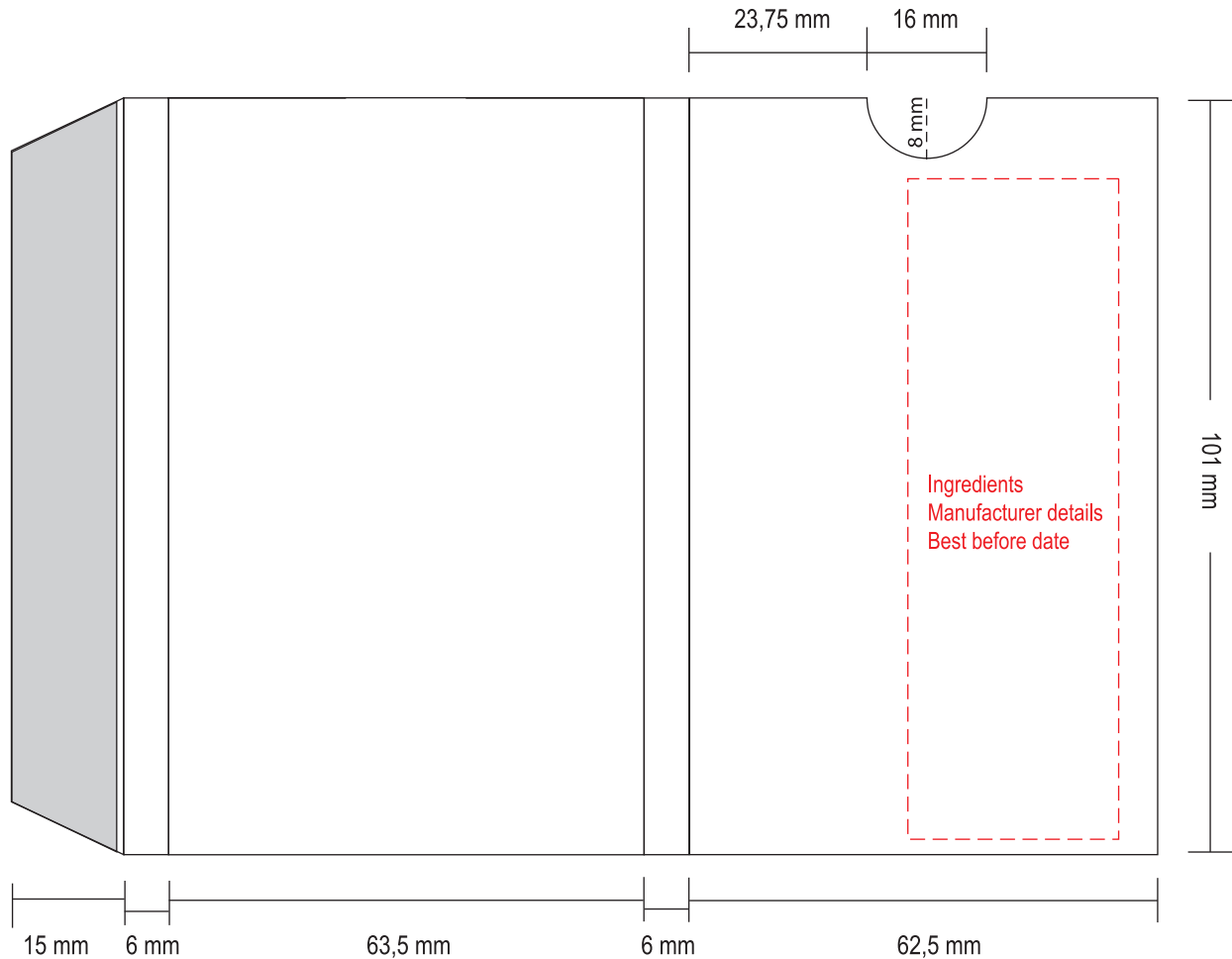


# Printing sketch

## Chewing Gum Blister - Slipcase



**File format:** EPS, PDF, PC-compatible

**Date:** **Artwork and fonts** have to be converted in vectors, please embed pictures and add the original data. Pictures in 300 dpi, scale 1:1, full tone motives in 1200 dpi.

**Colours:** Pantone C, HKS K, CMYK.



Printing colours are always translucent on a transparent foil. Transparent foil may require white printing surface, so colours do not appear too transparent. Consider our White Squares.

**Fonts:** Fonts have to be converted in vectors. Otherwise send us the font per Email (only PC fonts).



In accordance with the European Union Regulation No. 178/2002 for the improvement of food security we have to provide our products with a manufacturer reference (back tracking). The final customer, dealer or agency can determine who is to be indicated as circulator on the product package or if the manufacturer is to be named. We have to label all products with: Table of contents, shelf life and manufacturer details.